

Frederick Guttman

THE CHRONICLES OF ARI

PRESS KIT / AUTHOR DOSSIER
(Dossier del Autor)

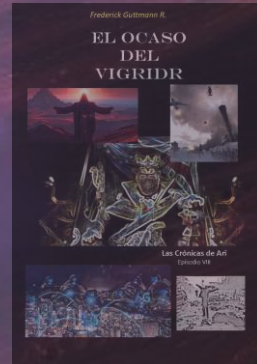
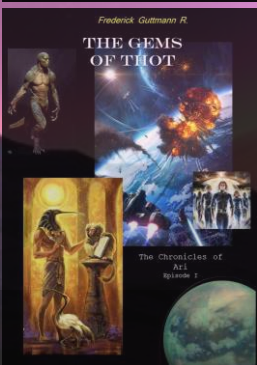
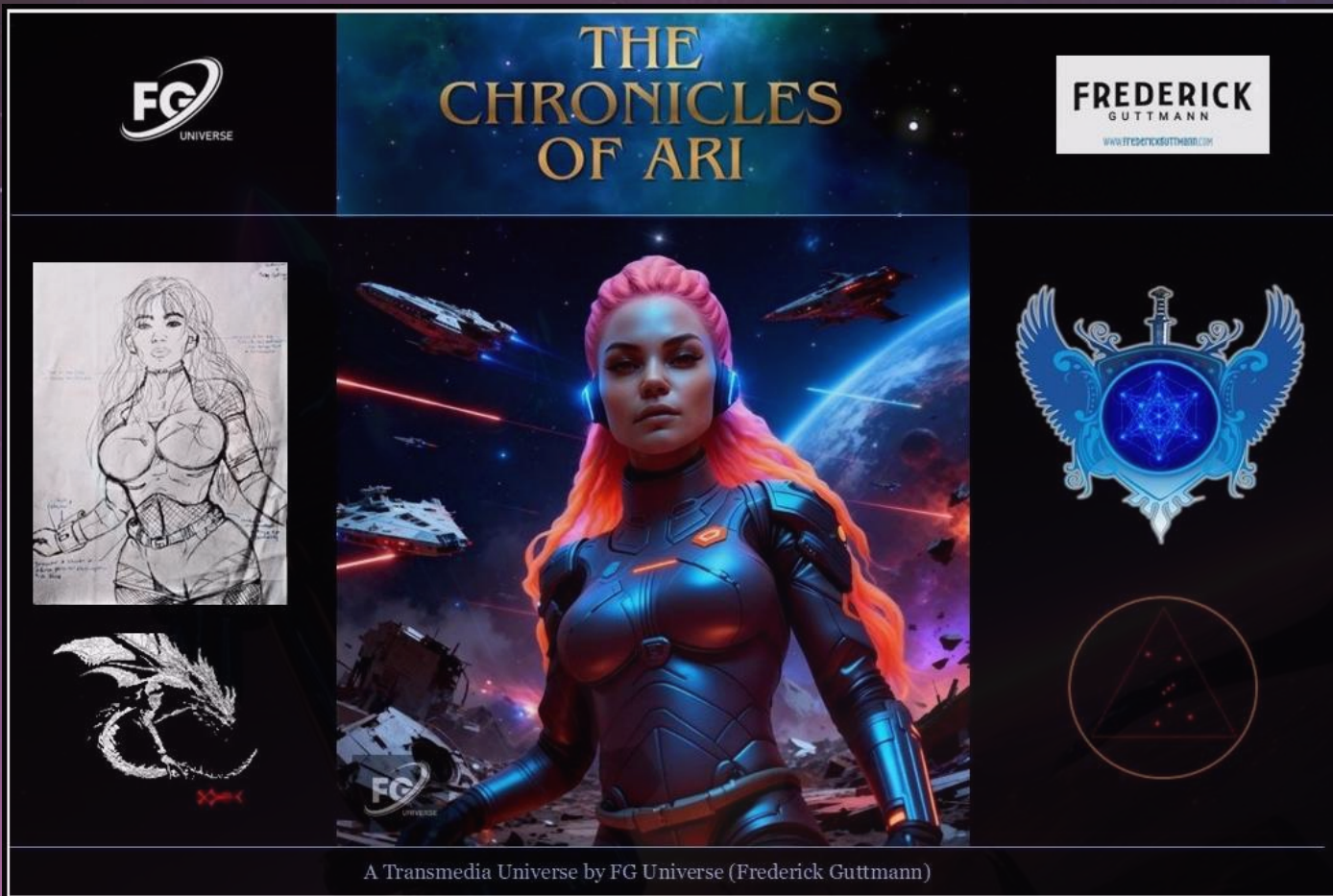
“A cosmic sci-fi saga about
awakening, destiny and
transcendence.”

FG Universe | © Frederick Guttman 2025

frederickguttman.com
frederickguttman@gmail.com

“When the stars remember our wars, the soul of humanity must awaken again.”

“When destiny awakens, one girl must face the echoes of her past lives to save all worlds.”



Based on current and forthcoming novels of *The Chronicles of Ari*.

PROJECT STATUS — DEVELOPMENT & MATERIALS

INDUSTRY READY



Summary

The project is fully developed at a professional level, with completed foundational materials and a clear production roadmap. Ready for producers, labs, studios and co-development partnerships.



Completed Materials

- ✓ Pilot Script — Episode 1 (“The Gems of Thot”)
- ✓ Season 1 Outline — 8 Episodes (45–55 min)
- ✓ Worldbuilding Bible — The Ari Universe
 - ✓ Characters & Casting Breakdown
 - ✓ Pitch Deck (current)
 - ✓ One Pager / Press Kit
- ✓ Lore Maps, Diagrams & Cosmic Structure
- ✓ Transmedia Timeline (2026–2036)
- ✓ Music Strategy (Covers + ZOONER Original Score)
- ✓ Budget Sheet (Season 1 Estimate: \$18M)
- ✓ LOI Draft (for partnerships)

Early Assets

- ✓ Five base books already written from the Ari Saga
- ✓ Comic — Volume 1 in advanced development
- ✓ Extended Universe with multi-format potential (Series, Animation, Film, RPG)

Ownership & Rights

- ✓ FG Universe — 100% Author-Creator Owned
 - ✓ Copyright Registered
- ✓ IP registered on multiple professional platforms (ISA, Stage32, FilmFreeway)
- ✓ All story elements, lore and characters fully protected

WHY THIS SERIES / WHY NOW



A New Myth for a Global Sci-Fi Audience

"*The Chronicles of Ari*" offers a completely original mythology in a landscape saturated with remakes and adaptations. It combines science fiction, universal archetypes, and modern spirituality for an audience seeking deeper stories.

Sci-Fi is Booming Again

Since *Dune*, *Foundation*, *The Expanse*, and *Avatar*, studios have been searching for sagas that can sustain entire universes. Ari delivers a fresh, emotional, scalable, and transmedia narrative from day one.

A Market Hungry for Transmedia Universes

New generations consume stories across multiple platforms (series, animation, comics, games). Ari was designed from the outset to expand and grow over a decade.

Diversity, Inclusivity & Global Themes

Ari and Guang represent identities, cultures, and struggles that resonate with audiences worldwide. It is a spiritual, cosmic, multicultural, and profoundly human universe.

A Story About Consciousness and Transformation

In a time of uncertainty, the series offers a narrative about purpose, memory, energy, awakening, and evolution.



It is a saga of light versus darkness... and of self-discovery.
“A universe built for the audience of today — and tomorrow.”

TARGET AUDIENCE & MARKET FIT

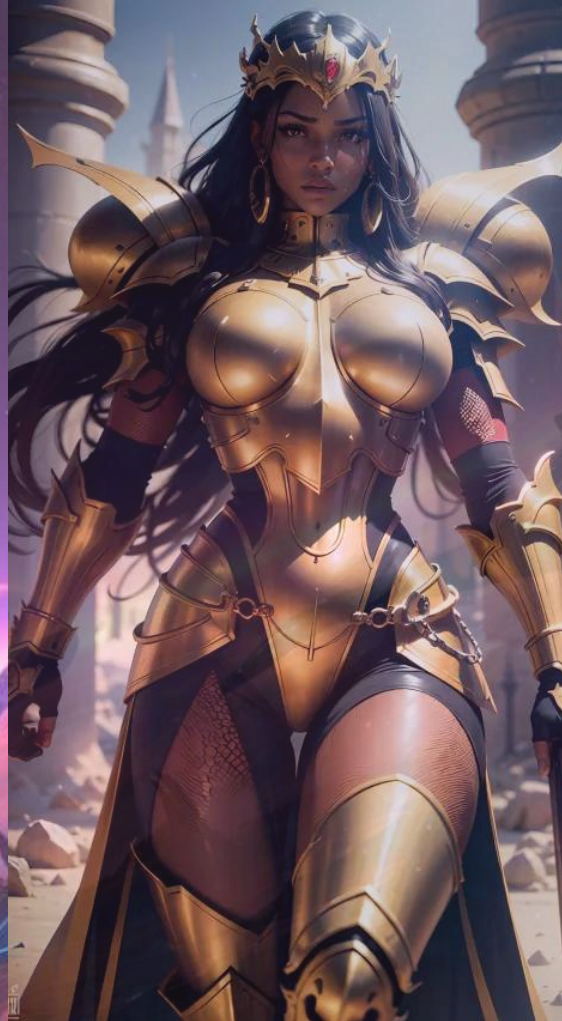


Primary Audience (Core):

- Ages 18–44
- Fans of epic sci-fi, cosmic mythologies & spiritual narratives
- Viewers of *Foundation*, *The Expanse*, *Star Wars*, *Avatar*, *Raised by Wolves*
- Readers of metaphysical and mythological fiction
- Gamers interested in expansive universes and lore

Secondary Audience:

- Graphic novel readers
- Fans of multi-platform storytelling (Marvel/DC model)
- Anime/animation fans of cosmic worlds
- Content creators & online lore communities
- Audiences seeking philosophical, spiritual or esoteric exploration through genre fiction



Market Fit — Why It Works

- High demand for **original sci-fi IP** (post-2020 streaming boom)
- Growing trend in spiritual/science hybrid content
- Lack of new franchises with long-term universe depth
- Unique blend of action, mystery, metaphysics and cosmic history
- International cast potential → global appeal

Cross-Demographic Reach:

- Visual spectacle → mainstream audience
- Deep lore → hardcore fans
- Emotional arcs → general drama viewers
- Philosophical depth → niche but loyal community

Ari succeeds because it combines scale + soul: A franchise for fans of epic stories... and for those seeking meaning.

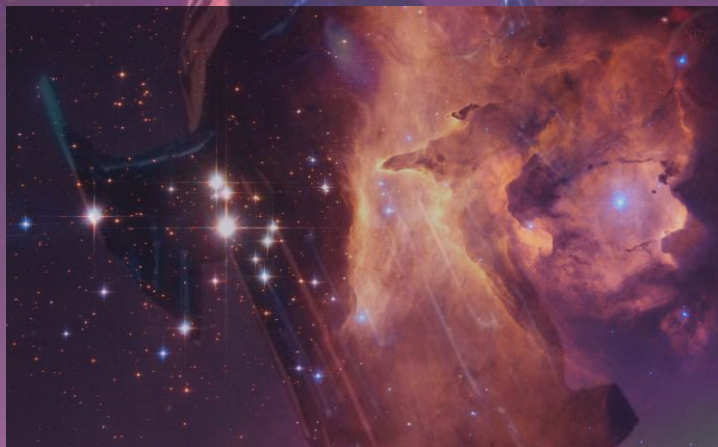
“Epic sci-fi for the new myth-seekers.”

The background image is a digital artwork of a desolate, rocky landscape under a vast, starry sky. Two prominent, dark, angular structures with glowing blue and purple energy lines and points stand on the left and right. A bright, orange and yellow horizon line cuts across the middle, with a small, glowing sphere floating above it. The overall color palette is dominated by deep blues, purples, and oranges.

WHAT IS THE CHRONICLES OF ARI?

“At its core, The Chronicles of Ari explores what happens when consciousness evolves faster than civilizations.”

A universe built across worlds, timelines and dimensions — grounded in humanity's spiritual evolution.



• FORMAT: 8×45' season / Feature potential



• TONE: Epic, spiritual, adventurous

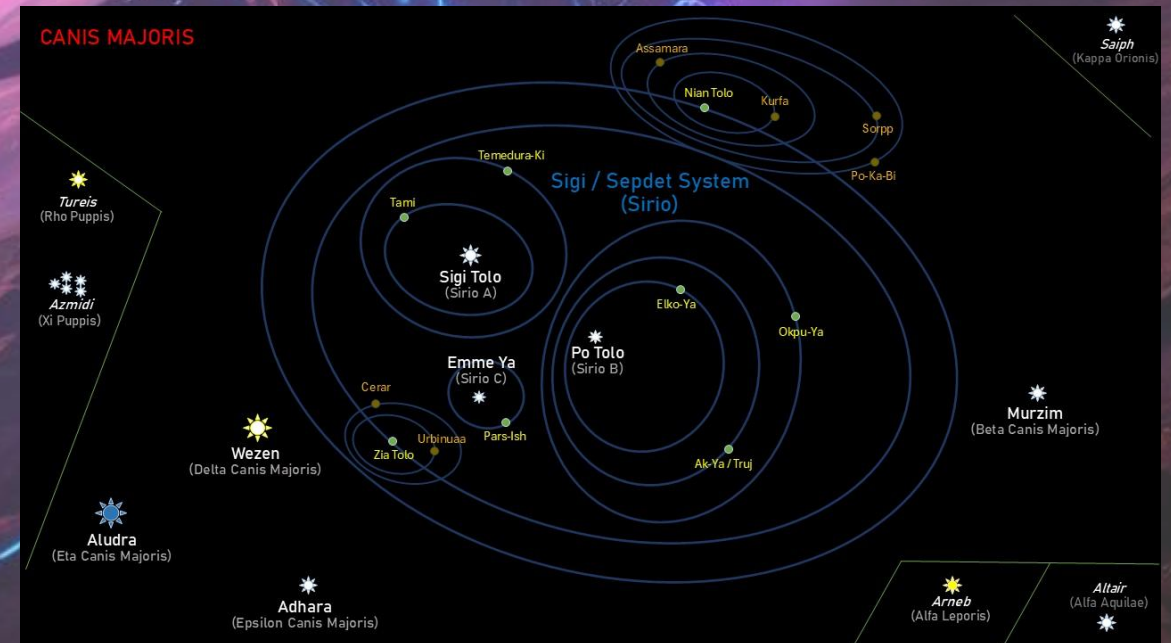
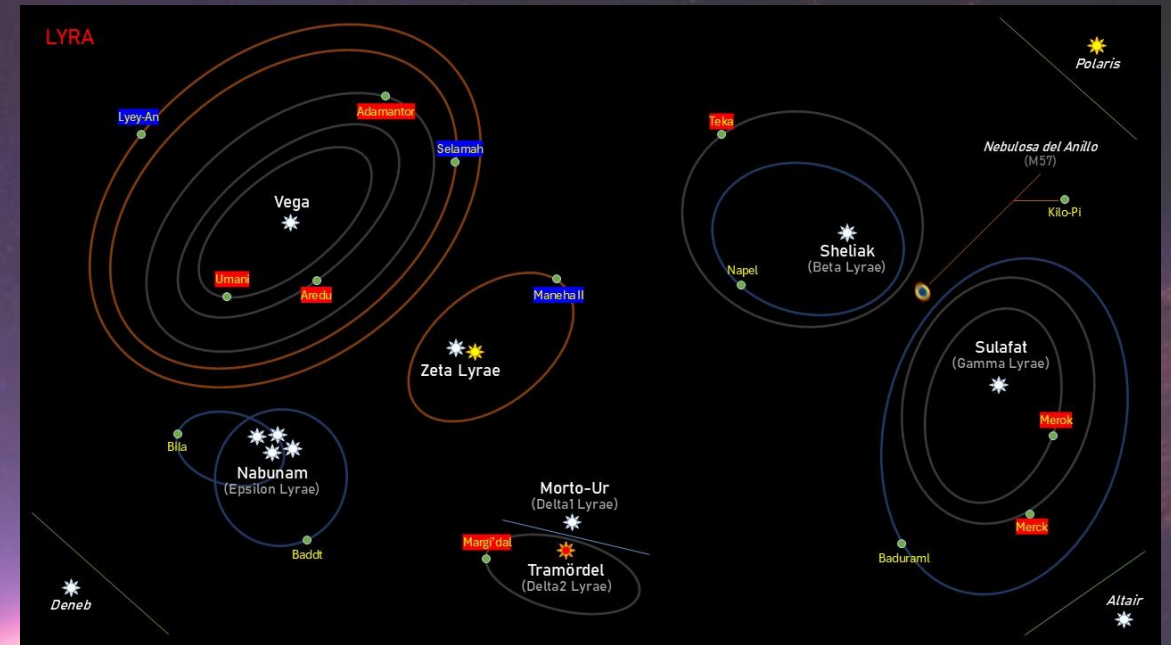


• AUDIENCE: General / Fans of epic sci-fi

PREMISE

“After four world wars, a gifted survivor begins receiving visions of her own death — leading her to uncover an ancient cosmic war that could ignite again.”

- Protagonist: ARI — 17, empathic, visionary.
- Stakes: If the Tilmun falls, history will be rewritten.
- Season arc: Quest → Loss → Resurrection → New beginning.



Season I – The Gems of Thoth

THE AWAKENING ARC

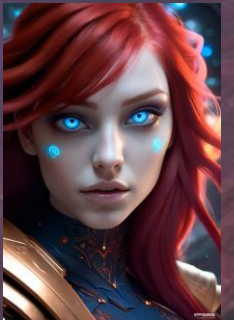
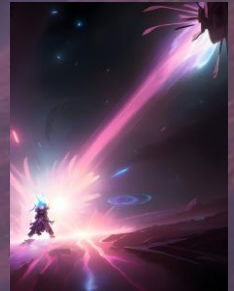
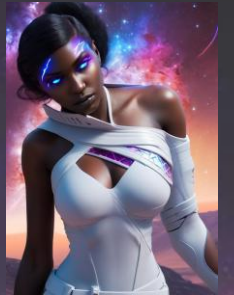
Ari, a gifted survivor of a post-apocalyptic Earth, begins receiving visions of her own death — pulling her into a hidden cosmic war older than humanity itself.

Together with Guang, another young survivor marked by tragedy, she uncovers the ancient power of the **Gems of Thoth**, artifacts capable of reshaping reality, time and destiny across entire star systems.

As they travel between worlds — including Mars to Venus to the past eras of Earth — Ari's awakening becomes the key to stopping a rebellion that threatens the entire galaxy.

Season One is a journey of rebirth, cosmic discovery, and the first step toward Ari's ascension.

“The awakening of a soul marks the dawn of a new cosmos.”



EPISODE BREAKDOWN (Season 1 (8×45 min))



Episode 1 – *Ari After Earth*

The fall of Lyra resurfaces through Ari's fractured memories—echoes of a forgotten humanity and a future still unfolding. Guang, a boy marked by destiny, crosses paths with her as both become entangled in a cosmic mystery that stretches across the galaxy.

Episode 2 – *The Martian Oracle*

Ari and Guang reunite on Mars, now home to a newly rising society. Guided by a cryptic Oracle, they uncover ancient clues just as Horus—watching from his distant world—decides to intervene, bringing with him his reptilian ally, Chester.

Episode 3 – *Secrets of the Gods*

Ari awakens alone in a desolate alien desert while her friends are lost in deep space. To save them, she must travel into the past. There, Osiris reveals the truth: the Zoton are attempting to reach ancient Earth to steal the Tilmun.

Episode 4 – *The Temporal Heist*

The Zoton's temporal incursions trigger catastrophic anomalies—Roswell, Tunguska, and more. They unleash Typhon into the timeline, forcing Zeus to confront him. Securing the Tilmun becomes critical, as it holds the power to manipulate the dimensional fabric itself.

Episode 5 – *Cydonia Rising*

Cydonia awakens as an ancient Martian battleground. Ari and her companions navigate subterranean ruins and forgotten traps as a dark force descends upon Mars to seize the first of the four Gems of Thoth.

Episode 6 – *Battle of the Suns*

The pursuit spreads across Venus and then Ganymede. As cosmic conflict escalates, Ari is forced into an inner journey—isolated, tested, and transformed. More Gems are recovered, yet the decisive one remains out of reach.

Episode 7 – *The Falcon and the Serpent*

The confrontation between Horus and Seth Shajor shakes Towsang. The Lammasu intervene as Thirium's forces advance. Amid the chaos, Ari is gravely wounded, and Fenix-Prime captures the Gems, taking them to a hellish planetoid.

Episode 8 – *Return from the Abyss*

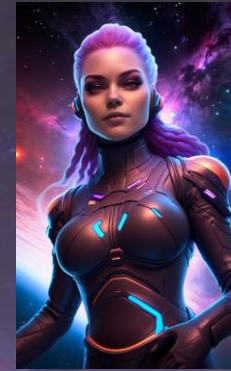
Ari descends into the underworld and confronts the echo of all her incarnations. As Horus and Guang risk everything to save her, a final battle ignites between Horus and Fenix-Prime. The Gems activate... and matter and time are irrevocably altered.

MAIN CHARACTERS

ARI

Age: 17 · **Origin:** Neo Aretz (Earth)
Role: Protagonist — The Awakened
Engine: Purpose vs. Fate

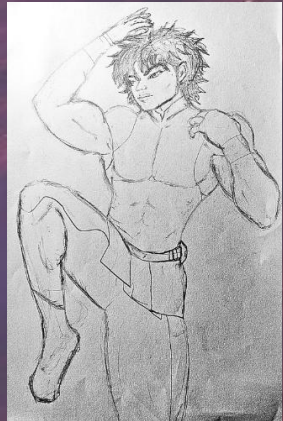
A gifted survivor of the post-apocalyptic Earth who receives visions of ancient cosmic wars she has never lived. Sensitive, compassionate and spiritually attuned, Ari hides a power linked to the Gems of Thoth—one that could either save the Heimarmene or trigger its collapse. Her greatest fear isn't death... it's becoming what destiny demands of her.



GUANG

Age: 17 · **Origin:** Neo Aretz (Earth)
Role: Co-Protagonist — The Anchor
Engine: Loyalty vs. Fear

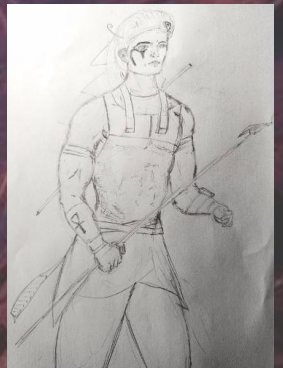
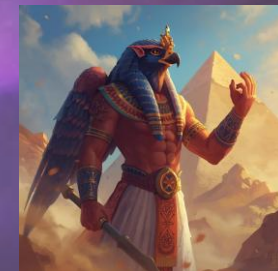
Having survived the attack that wiped out his family, Guang becomes Ari's closest ally and emotional support. Pragmatic yet deeply intuitive, he calms her when her visions overwhelm her. He possesses no special powers, but his courage and physical prowess repeatedly turn the tide of the cosmic war. What he lacks in intellect, he more than makes up for with unwavering human resilience.



HORUS

Age: 26.566 · **Origin:** Algol (Persei System)
Role: The Warrior Sage — The Guide
Engine: Legacy vs. Justice

A legendary commander of the ancient interstellar dynasties, Horus is both a warrior and a mentor. Noble, fiercely loyal, and bound by honor, he sees in Ari the spark that once ignited revolutions in ages past. His strategic mind and combat mastery make him a key ally—but his inherited rivalry with dark forces like Set casts a long shadow over their mission. Horus has seen this cosmic cycle repeat for millennia — but this time, its outcome rests on Ari.



CHESTER

Age: 381 (≈70 in his species) · **Origin:** Okto, Saiph System (Orion)

Species: Usumgal-Tanei (Reptilian lineage)

Role: Rebel Ex-Prince — The Exiled Heir

Born into the Arlée dynasty of Saiph, Chester was taken off-world after his father's overthrow. A warrior of formidable genetics and moral conflict, he hides a wounded heart and a legacy that could change the course of the cosmic conflict beneath his hardened exterior.



JIVAH

Age: Eternal (First incarnation ~25,000 years before H'Maljut) · **Origin:** Primordial Earth

Role: Team Guide — The First Woman

An eternal being whose first mortal incarnation was that of the original Eve. She comes from the future to save this timeline from fate. Though seemingly a minor character in the first season, she becomes vital to the saga's metaphysical arc.



THIRJUM SHEN

Age: 12,500 · **Origin:** Tri'na, Mintaka System (Orion Belt)

Species: Manasura

Role: Primary Antagonist — The Cosmic Usurper

A tyrant manipulated by an ancient force older than the Zoton themselves, seeks the Gems of Thoth to break fate and unleash the greatest Zoton warlord to destroy the Confederation. Cold, brilliant, and ruthless, he bears the weight of an ancient prophecy that Ari's awakening now threatens.



FENIX-PRIME

Age: 80 (≈35 in his species) · **Origin:** Goata, Ayyl System (Capricorn)

Role: Dual Entity — The Reborned

Young for his kind but immensely powerful, Fenix-Prime is a formidable warrior of darkness who turns his back on Zoton. A symbol of persistence and tenacity, he rises from the ashes as a central figure in the Ari universe.



The drawings presented here belong to the characterizations in current development of the comic 'The Gems of Tot' episode I.

TIMELINE OF THE ARI UNIVERSE



This universe spans past, present and future — but Season 1 remains fully standalone and self-contained.

The Chronicles of Ari merges spiritual mythology with futuristic science fiction.
Its visual tone blends celestial mysticism, ancient symbolism, and cosmic technology — creating a world where divine light and galactic war coexist.

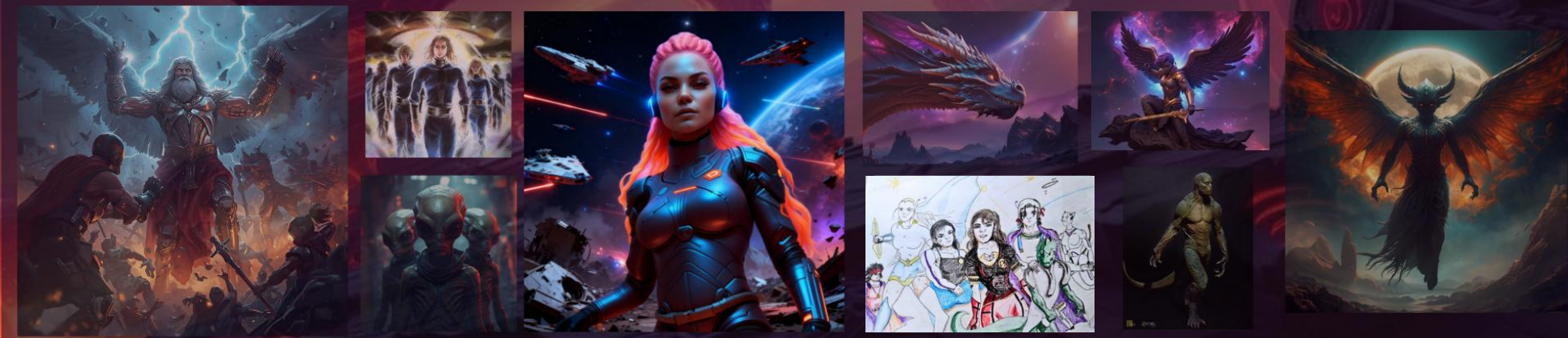
WORLD & ENVIRONMENTS

from the red sands of Mars to the crystalline cities of Neo Aretz, from the luminous temples of Horus to the shadowed realms of the Zoton Empire



CHARACTERS & BEINGS

Souls of light and shadow, celestial guardians and fallen gods — each embodying aspects of consciousness and evolution.



TECHNOLOGY & SYMBOLISM

Technology is divine in Ari's universe. Crystals, sound, and geometry are the basis of machines, ships, and consciousness transfer.



SPIRITUAL TONE

The saga is not just about war — it's about the awakening of the soul. Each image reflects transcendence, loss, unity, and cosmic rebirth



CINEMATIC INSPIRATIONS

The visual spirit of Ari echoes through these cinematic worlds — where mysticism, emotion, and cosmic scale converge.

Visual tone references below: (from left to right): Saint Seiya (1986), The Matrix (1999), V (1983), Dragon Ball (1996), Star Wars (1999), Man of Steel (2013).

All film stills are used for visual inspiration purposes only.



BUDGET OVERVIEW — SEASON 1

Format: 8 Episodes × 45–55 minutes

Production Level: Live action + Hybrid CGI

Estimated Total Budget: USD \$18,000,000

Estimated Cost per Episode: USD \$2.25M

Core Budget Distribution:

- VFX + CGI: \$5.0M
- Cast: \$2.4M
- Crew: \$2.0M
- Production Design: \$1.5M
- Music (Covers + Original Score): \$120k
- Post-Production: \$1.2M
- Sound Design: \$750k
- Hybrid Animation: \$1.0M
- Locations & Travel: \$900k
- Insurance, Legal & Contingency: \$2.5M

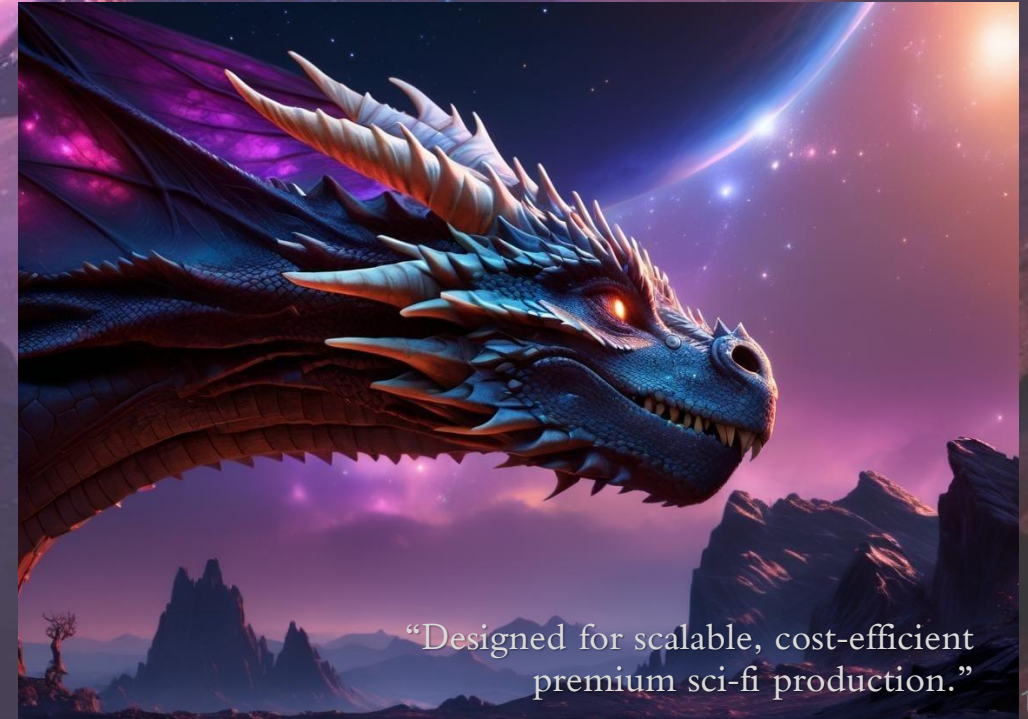
Production Strategy:

Optimized mid-high range sci-fi model using a hybrid workflow of:

- Green-screen + digital environments
- Creature simulation
- Modular practical sets
- Digital augmentation
- “Cinematic TV” final look

Comparable Industry Benchmarks:

The Expanse (mid-tier), *Foundation* (tier-2), *Altered Carbon*, *Stargate Origins*.



“Designed for scalable, cost-efficient premium sci-fi production.”

TRANSMEDIA STRATEGY & POTENTIAL

A Universe Designed for Multi-Platform Expansion

The Chronicles of Ari was born as a complete transmedia IP, built to expand into multiple formats over 10 years.

Existing Canon

- 5 books already written from the Ari Saga
- Comic Vol. 1 in advanced development
- Full worldbuilding bible + cosmic timeline
- Characters, lore maps and dimensional cosmology

All transmedia formats draw from existing written canon, ensuring consistency and long-term scalability.



Core Transmedia Pillars

1. Television (Primary Format)

Season 1: "The Gems of Thot"

Season 2: "The Twelve Realms"

Seasons 3–4: "The Andromeda Saga"

2. Animated Miniseries

Cosmic prequels

Mythological arcs

Lost civilizations (Lyra, Mars, Maldek, Orion, Atlantis)

3. Feature Films

High-scale cosmic wars

Origin events

Apocalypse & Rebirth arcs

4. Comics, Visual Novels & Illustrated Lore

ongoing stories covering parallel characters

origin tales

mythic backstories

5. RPG / Interactive Media (Future Phase)

exploration of galaxies

metaphysical abilities

faction-based gameplay

multiple timelines and realms

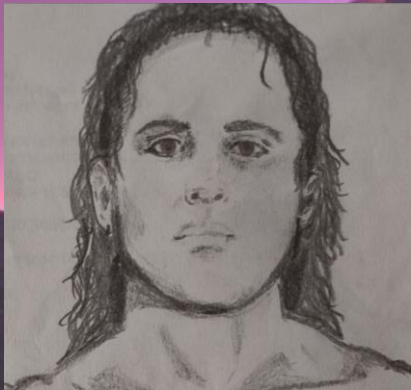
"A saga designed to last a decade, with organic growth and a universe vast enough to sustain it."



“Original soundtrack in development with independent musicians and in-house band. Covers and licensed tracks available depending on partner’s needs.”

AUTHOR & CREATIVE VISION

“The Chronicles of Ari is more than a saga — it is a mirror of our search for consciousness and redemption.”



AUTHOR & TRANSMEDIA CREATOR

Frederick Guttman

Writer · Researcher · Transmedia Worldbuilder

Frederick Guttman is the creator of *The Chronicles of Ari*, a large-scale transmedia universe spanning novels, comics, animation concepts and serialized screen content. With more than forty published books — including five novels from the Ari Saga — his work blends mythology, ancient civilizations, spiritual philosophy and speculative science into a coherent, cinematic mythos built for multi-season television and cross-platform expansion.

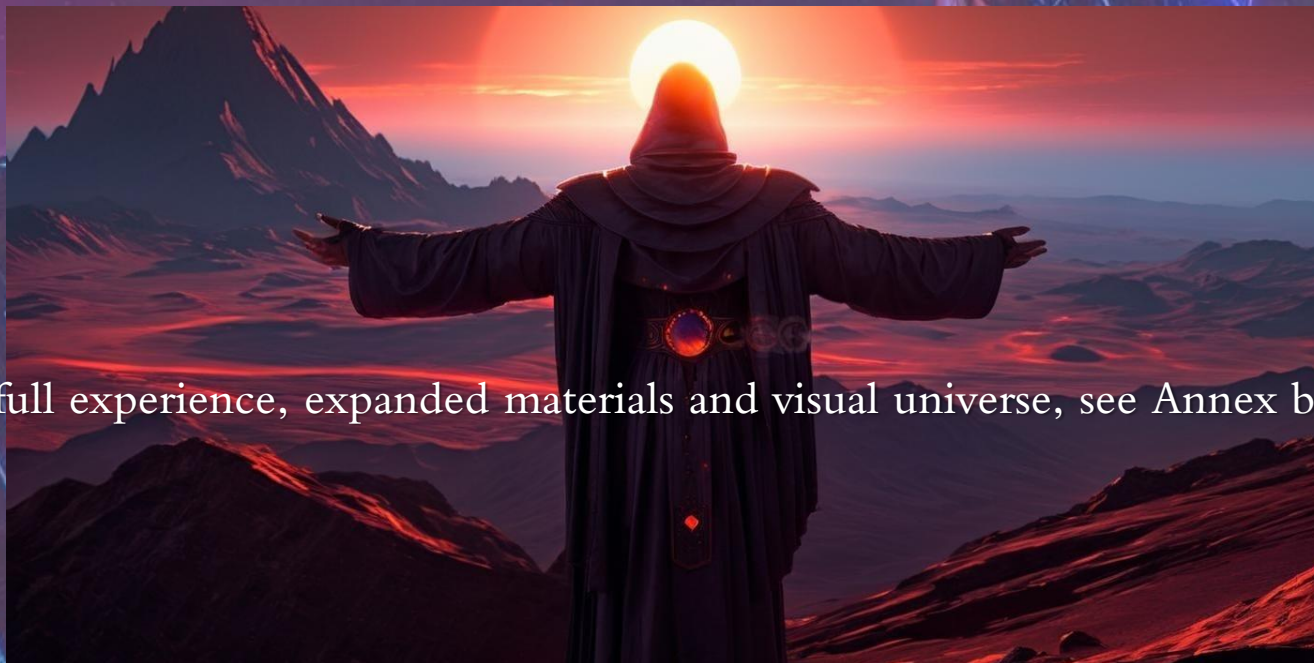
As a worldbuilder, Frederick develops interconnected cosmologies, species lineages, metaphysical systems and long-arc narrative structures that extend across galaxies, timelines and dimensions. His storytelling merges high-concept sci-fi with metaphysical depth, producing immersive worlds with franchise potential.

Based in the Canary Islands and working internationally, Frederick continues expanding the FG Universe, collaborating with artists, filmmakers and musicians to shape an epic narrative designed for series, animation, film and interactive media.



*“I don’t write stories about the future
— I write stories about memory.”*

— Frederick Guttman



“For full experience, expanded materials and visual universe, see Annex below.”

ANNEX & FULL DOCUMENTS AVAILABLE

SUPPORTING MATERIALS AVAILABLE (Upon Request)

Core Narrative Materials

- **Treatment — Season 1: “The Gems of Thoth”**
Narrative overview and cinematic structure.
- **Pilot Script — Episode 1**
Final draft formatted for industry submission.
- **Episode Breakdown (8x45’)** — Season 1
Short-form episode summaries.

Universe & Worldbuilding

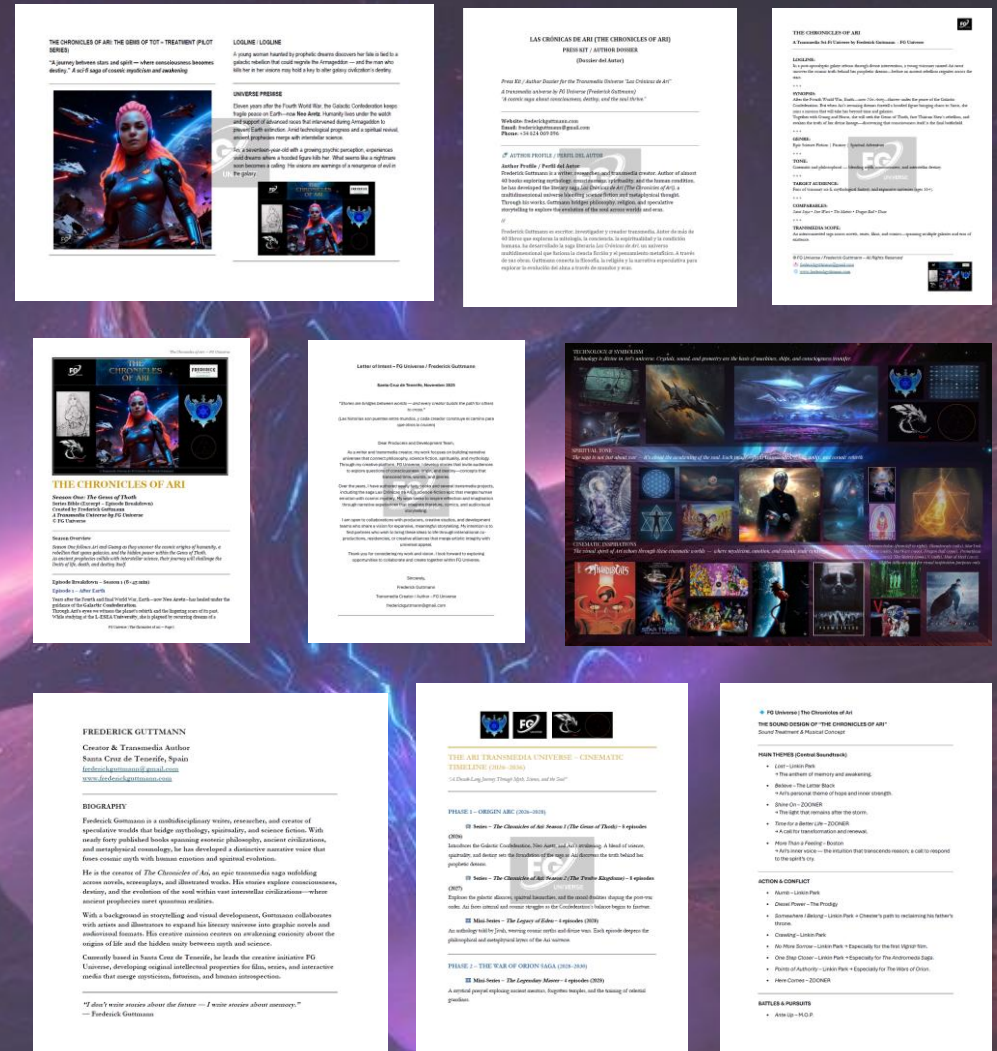
- **Worldbuilding Document (Lite)**
Key locations, factions, cosmology & thematic framework for Season 1.
- **Transmedia Universe Overview**
Macro structure of the FG Universe across series, films, animation, and narrative eras.
- **Cinematic Transmedia Timeline (2026–2036)**
Multi-format expansion plan (series, features, mini-series, comics).

Visual & Creative Assets

- **Visual Moodboard**
Art direction, tone, color identity, environmental concepts.
- **Casting Breakdown**
Character profiles and casting directions for principal roles.
- **Sound & Music Strategy**
Musical palette, emotional mapping, and licensed/cover hybrid plan.

Professional Materials

- **Press Kit & Creator Bio**
Author background, artistic vision, and creative mission.
- **Letter of Intent**
Development goals and collaboration framework.
- **Budget Overview (Excel)**
Preliminary Season 1 production ranges (VFX-oriented).



For full access or collaboration inquiries:
frederickguttman@gmail.com
www.frederickguttman.com
FG Universe © 2025 – All Rights Reserved

CREATOR'S VISION STATEMENT — FREDERICK GUTTMANN

"The Chronicles of Ari" is my life-long universe — a story born from more than a decade of worldbuilding, research, and narrative exploration. My vision is to create a multi-layered sci-fi epic that merges myth, metaphysics, cosmic history and human emotion into a unified cinematic experience.

At its core, this story explores:

- the evolution of consciousness
- the nature of power and corruption
- the resilience of the human spirit
- and the invisible forces shaping civilizations beyond time and space

Through Ari and Guang's journey, the series navigates **mythological ancestry, galactic wars, ancient gods, and the rebirth of worlds**, blending cosmic spectacle with intimate character arcs.

I envision *The Chronicles of Ari* as:

- a transmedia universe connecting books, series, animation, film and interactive stories
- a deeply emotional epic, grounded in identity, memory, and purpose
- a spiritual sci-fi, where every battle mirrors an inner transformation
- a new mythos, built for global audiences
- a long-term IP, designed to grow for a decade

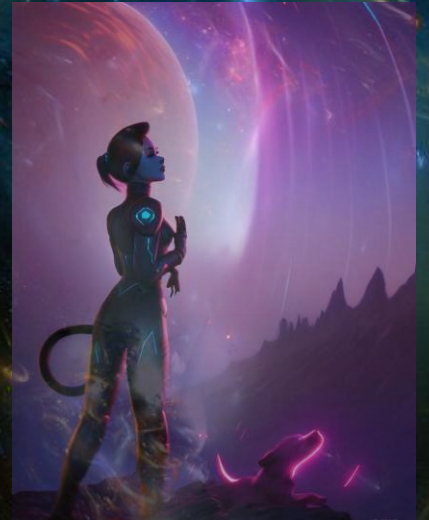
My commitment is to build a universe that feels **vast, coherent and alive**, and a story that audiences can return to for years.

This is more than a series — it is the first chapter of a cosmic legacy.



A Transmedia Universe by FG Universe (Frederick Guttman)

“A transmedia odyssey across galaxies, souls, and time itself.”



- [LinkedIn](#)
- [Stage32](#)
- [Film Freeway](#)

FG Universe © Frederick Guttman

www.frederickguttman.com
frederickguttman@gmail.com

All concepts, storylines, and artwork are part of “The Chronicles of Ari” transmedia universe.